



[Ver. 2024.01.03.]

무대 기술정보 안내

STAGE TECHNICAL SPECIFICATIONS

아르코예술극장

ARKO Arts Theater

소극장

Small Hall

1. General Information



- **Black Box Stage**

- Width 11.65m
- Depth 14.86m (The distance from the end of the auditorium seat to the back wall of the back stage)
- Depth 10.32m (The distance from the entrance to the back wall of the back stage)
- Height 4.9m

※ There are a total of 3 entrances, including the middle gate on the stage right and 2 doors on back stage.

- **Total Auditorium seats 132**

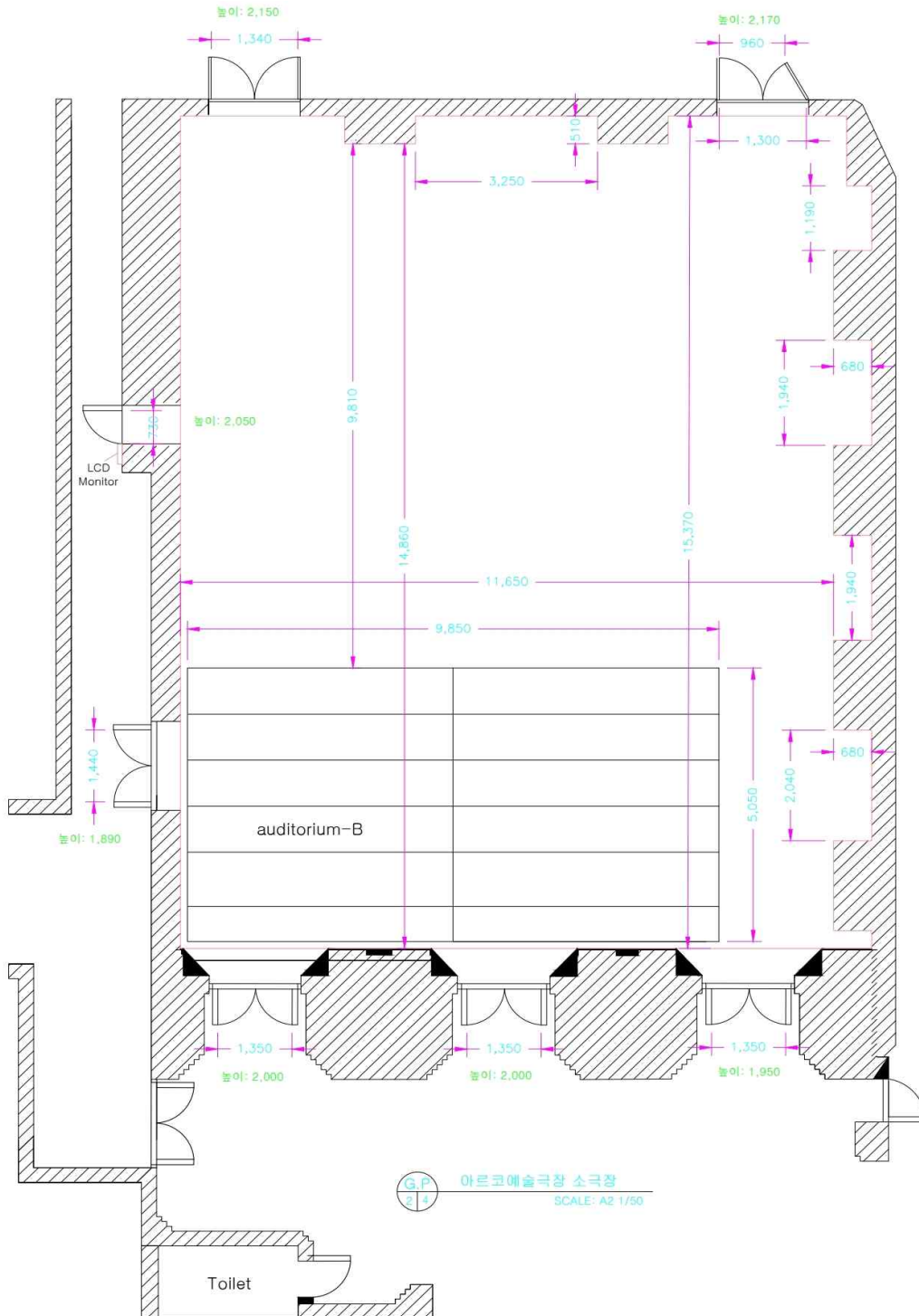
- It takes manpower and time to move and change the location

- **Stage Manager Desk**

- There is no separate Stage Manager Desk
- Available the wired and wireless intercom, walkie-talkie
- There is Mobile monitor (Infrared camera) in the Stage right passage.

- **All equipment and goods in the theater can be moved after consultation in advance.**

1-2. General Information 2



노트(NOTES)

- 가로 11,650
- 세로 9,810 (객석 끝선에서 뒤 벽까지)
- 높이 4,900
- 무대 활용면적 $11,650 \times 9,810 = 114.3\text{m}^2 = 34.6\text{평}$
- 객석 크기 $9,850 \times 5,050$
- 출입문(반입구) 크기 $1,350 \times 1,950$

- 그리드 크기 550×550
- 조명 발코니 길이 11,500, 높이 4,200
- 사이드 파이프 길이 14,000

- 음향무스 그리드에서 스피커까지 길이 7,500
- 무대 뒤 벽에서 메인 스피커까지 길이 6,700
- 무대 바닥에서 메인 스피커까지 높이 4,200
- 프로젝터 선반에서 뒤 벽까지 거리 15,370



2. Working Policy

- Work schedule

	A.M	Break time	P.M	Break time	Night	Deadline
Start	09:00	12:00	13:00	17:00	18:00	22:00
End	12:00	13:00	17:00	18:00	22:00	

※ In the case of dinner time, if there is a Night rental, consultation are available between 17:00~18:00 or 18:00~19:00

- Safety helmet

Sortation		Place	
		Auditorium	Stage
Set up		When you work on ceiling, 2 nd Floor, balcony : Must-wear	Must-wear
		When there's no console booth or top work : Don't wear	
Rehearsal	Upper part and fixing focusing	Don't wear	Must-wear
	Technical and Dress rehearsal	Don't wear	Don't wear
Show		Don't wear	Don't wear
Withdrawal		When you work on ceiling, 2 nd Floor, balcony : Must-wear	Must-wear
		When there's no console booth or top work : Don't wear	

- Type A ladder

- Common information

- A. Must sure to wear a safety helmet when working on ladders
- B. It can only be installed on a flat, sturdy, non-slip floor
- C. Must have to work in pairs

- The height that you can be able to work on (Based on the foothold with feet)

Height	Forbidden work
Less than that 1.2m~2m	Can't work on the top footstep
More than 2m less than 3.5m	Wearing harnesses, Can't work on the top and second top footstep
Excess 3.5m	Do not use

- Flame retardant finish

- After flame retardant finish, submit your test report (Within 2 years)
- Safety check at the site

- Special effects

- Decide after prior consultation with the theater

3. Loading Dock



ARKO Arts theater Small hall entrance

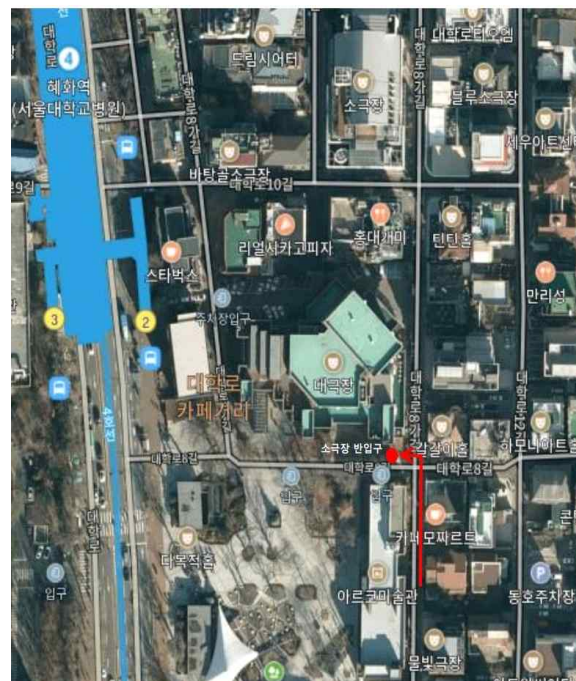
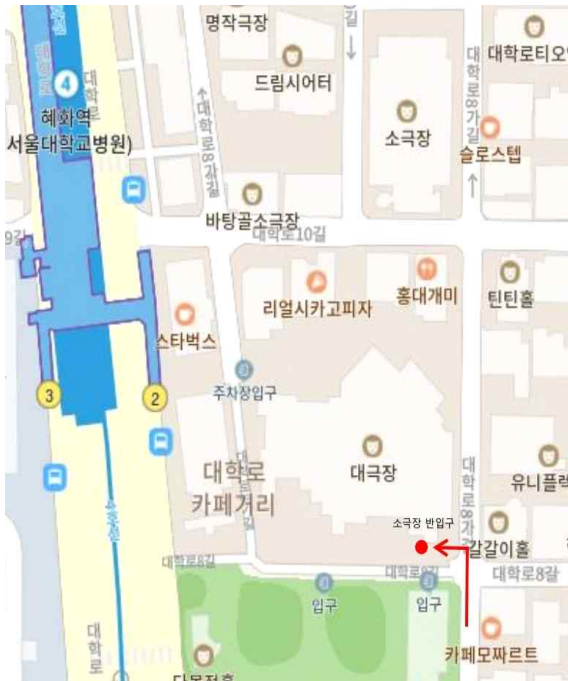


The theater inner door

- Size

- Width 1,580mm
- Height 1,900mm

- Location – It's in front of ARKO Arts theater Small hall entrance



4. Over Stage



- It consists of a grid structure.
The distance between the grid 560mm x 560mm
- Size
 - 48Ø (Diameter 48mm)



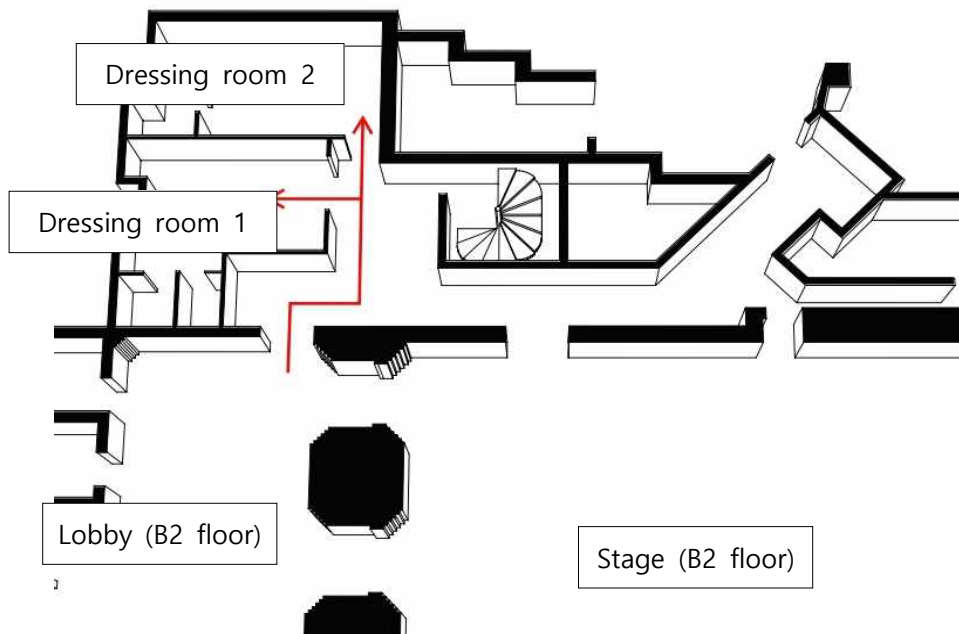
5. Platform

※ Only the quantity held in the theater should be used, buy it can be moved **within ARKO Arts theater Main Hall and Small Hall** in consultation with the stage manager in charge.

Standard (size : cm)	Quantity
1×2 (30×60)	2
1×3 (30×90)	0
1×4 (30×120)	2
1×6 (30×180)	2
2×2 (60×60)	1
2×3 (60×90)	1
2×4 (60×120)	3
2×6 (60×180)	6
3×3 (90×90)	1
3×4 (90×120)	2
3×6 (90×180)	4
3×9 (90×270)	10
4×6 (120×180)	3
4×9 (120×270)	7
6×6 (180×180)	2
6×9 (180×270)	0
Apple box (30×45)	50
Stairway (90×90)	0
T = 15cm	

6. Dressing room

- Location

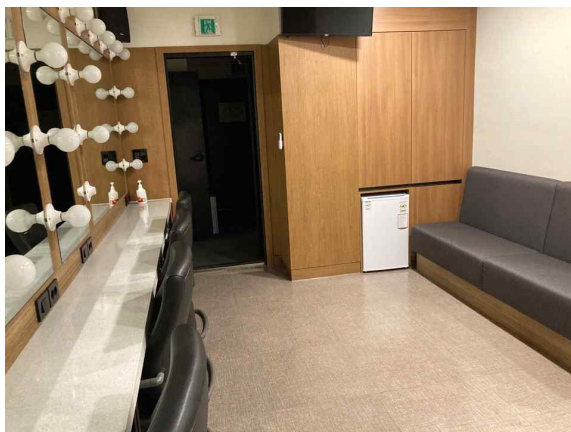


※ It is located in aisle Stage right

- Facility

Dressing room	location	Number of people used	Shower	Toilet	Note
1	B2 floor	10 people	○	○	
2	B2 floor	10 people	○	○	

Reference Picture



Dressing room 1



Dressing room 2